

REGISTRATION DOCUMENT



INVESTEC BANK plc

(A company incorporated with limited liability in England and Wales with registered number 489604)

This document (as amended and supplemented from time to time and including any document incorporated by reference herein) constitutes a registration document (the "**Registration Document**") for the purposes of Article 5.3 of Directive 2003/71/EC (the "**Prospectus Directive**"). This Registration Document has been prepared for the purpose of providing information about Investec Bank plc (the "**Bank**") to enable any investors (including any persons considering an investment) in any debt or derivative securities issued by the Bank ("**Securities**") during the period of twelve months after the date hereof to make an informed assessment of the assets and liabilities, financial position, profit and losses and prospects of the Bank as issuer of such Securities. Information on any Securities can be found in a separate securities note containing disclosure on such Securities (and, where appropriate, in the relevant summary note applicable to the relevant Securities), which, together with this Registration Document, constitutes a prospectus issued in compliance with Article 5.3 of the Prospectus Directive. Investors seeking to make an informed assessment of an investment in any Securities are advised to read the whole prospectus (including this Registration Document).

This Registration Document has been filed with, and approved by, the Financial Conduct Authority (the "**FCA**"), in its capacity as the United Kingdom ("**UK**") competent authority under the Financial Services and Markets Act 2000 (the "**FSMA**").

Information on how to use this Registration Document is set out on page i.

Principal risk factors relating to the Bank are set out in "Risk Factors" on pages 1 to 17.

20 July 2016

HOW TO USE THIS REGISTRATION TO DOCUMENT

All references in this section of this Registration Document to "Bank" and "Issuer" refer to Investec Bank plc, all references to "Group" refer to Investec Bank plc and its subsidiary undertakings and all references to "Investec Group" refer to Investec plc and Investec Limited.

This Registration Document provides information about Investec Bank plc (the "**Bank**") and incorporates by reference the annual report (including the auditors' report and audited consolidated annual financial statements) for the financial year ended 31 March 2016 of the Bank, which has previously been published and filed with the FCA (the "**2016 Annual Report**"). The 2016 Annual Report includes the latest publicly available financial information relating to the Bank and its subsidiary undertakings (the "**Group**") and other information in relation to the Group, which is relevant to investors. This Registration Document (including such information incorporated by reference) contains information necessary for investors to make an informed assessment of the Bank. Investors must read this Registration Document together with the 2016 Annual Report. Where further information is provided in the 2016 Annual Report on matters covered by this Registration Document, this is highlighted in this Registration Document.

This Registration Document is split up into a number of sections, each of which is briefly described below.

Important Notices sets out important information about the Bank's responsibility for this Registration Document and provides information about its authorised use.

Risk Factors provides details of the principal risks relating to the Bank that may affect the Bank's ability to fulfil its obligation under its Securities.

Documents Incorporated by Reference provides details of the documents incorporated by reference which form part of this Registration Document and which are publicly available.

Business Description of the Bank provides information about the Bank and the Group, including on its history and development, the legislation under which it operates, its principal activities and markets, its organisational structure, trends affecting the Bank, its credit ratings and its management.

General Information provides additional, general disclosure in relation to the Bank.

IMPORTANT NOTICES

The Bank accepts responsibility for the information contained in this Registration Document. To the best of the knowledge of the Bank, which has taken all reasonable care to ensure that such is the case, the information contained in this Registration Document is in accordance with the facts and does not omit anything likely to affect the import of such information.

This Registration Document is to be read and construed with any amendment or supplement hereto and with all documents incorporated by reference into it.

*No person has been authorised to give any information or to make any representation not contained in or not consistent with this Registration Document, including any documents incorporated by reference herein, and, if given or made, such information or representation must not be relied upon as having been authorised by the Bank, any trustee or any dealer appointed in relation to any issue of debt or derivative securities by the Bank ("**Securities**").*

This Registration Document should not be considered as a recommendation by the Bank, any trustee or any dealer appointed in relation to any issue of Securities that any recipient of this Registration Document including any document incorporated by reference herein, should purchase any Securities. Each investor contemplating purchasing any Securities should make its own independent assessment and appraisal of the financial condition, affairs and creditworthiness, of the Bank. No part of this Registration Document, including any documents incorporated by reference herein, constitutes an offer or invitation by or on behalf of the Bank, any trustee or any dealer appointed in relation to any issue of Securities or any of them to any person to subscribe for or to purchase any of the Securities.

Neither the delivery of this Registration Document or any documents incorporated by reference herein or any prospectus or any final terms nor the offering, sale or delivery of any Securities shall, in any circumstances, create any implication that there has been no change in the affairs of the Bank since the date hereof, or that the information contained in the Registration Document is correct at any time subsequent to the date hereof or that any other written information delivered in connection herewith or therewith is correct as of any time subsequent to the date indicated in such document. Any dealer or trustee appointed in relation to any issue of Securities expressly does not undertake to review the financial condition or affairs of the Bank or its subsidiary undertakings during the life of such Securities. Investors should review, inter alia, the most recent financial statements of the Bank when evaluating the Securities or an investment therein.

The distribution of this Registration Document, including any document incorporated by reference herein, and the offer or sale of Securities may be restricted by law in certain jurisdictions. Persons into whose possession this Registration Document or any document incorporated by reference herein or any Securities come must inform themselves about, and observe, any such restrictions. For a description of certain restrictions on offers, sales and deliveries of Securities and on the distribution of this Registration Document, including any document incorporated herein by reference, see the applicable description of arrangements relating to subscription and sale of the relevant Securities in the relevant prospectus.

In this Registration Document and in relation to any Securities, references to the "relevant dealers" are to whichever of the dealers enters into an agreement for the issue of such Securities as described in the applicable description of arrangements relating to subscription and sale of the relevant Securities in the relevant prospectus, references to the "relevant paying agents" are to whichever payment agents appointed by the Bank in respect of the relevant Securities and references to the "relevant final terms" are to the final terms relating to such Securities.

In this Registration Document, unless otherwise specified or the context otherwise requires, references to "sterling", "pounds", "£", "pence" and "p" are to the lawful currency of the UK. In this Registration Document, the term "PRA" shall mean the Prudential Regulation Authority of the UK and the "FCA" shall mean the Financial Conduct Authority.

TABLE OF CONTENTS

Risk Factors	1
Documents Incorporated by Reference	18
Business Description of the Bank	19
General Information	29

RISK FACTORS

This section contains risk factors relating to the Bank. All references in this section of this Registration Document to "**Bank**" and "**Issuer**" refer to Investec Bank plc, all references to "**Group**" refer to Investec Bank plc and its subsidiary undertakings and all references to "**Investec Group**" refer to Investec plc and Investec Limited.

Prospective investors in any debt or derivative securities issued by the Bank ("**Securities**") should read this Registration Document (including all documents incorporated by reference herein) together with any securities note containing information about such Securities (and where appropriate, the relevant summary note), which together constitute a prospectus. Investing in any Securities involves certain risks. Prospective investors should consider carefully the risks set forth below in relation to the Bank and the other information set out in this Registration Document and elsewhere in the prospectus (including in any documents incorporated by reference) and reach their own views prior to making any investment decision with respect to any Securities.

This Risk Factors section contains information about the risks involved in an investment in any Securities issued by the Bank, which the Bank considers to be the principal risk factors relating to the Bank that may affect the Bank's ability to fulfil its obligations under the Securities.

Risks relating to the macro-economic environment in which the Bank operates

Market risks, business and general macro-economic conditions and fluctuations as well as volatility in the global financial markets could adversely affect the Bank's business in many ways.

The Bank is subject to risks arising from general macro-economic conditions in the countries in which it operates, including in particular the UK, Europe, Asia and Australia, as well as global economic conditions.

During the global financial crisis that started in mid-2008, the UK economy experienced a significant degree of turbulence and periods of recession, adversely affecting, among other things, market interest rates, levels of unemployment, the cost and availability of credit and the liquidity of the financial markets. Whilst economic indicators in the UK had started to improve in 2015, the outlook is currently very uncertain given the outcome of the referendum for the UK to leave the European Union. Since a significant portion of the Bank's operating profit is derived from clients based in the UK, it is particularly exposed to the condition of the UK economy, including house prices, interest rates, levels of unemployment and consequential fluctuations in individual clients' disposable income and corporate clients' profits.

In recent years, economic conditions in the other countries in which the Bank operates have been negatively impacted by a number of global macroeconomic trends, including ongoing concerns surrounding the significant sovereign debts and fiscal deficits of several countries in Europe, a weakening of the Chinese economy, the potential exit of member states from the European Monetary Union and a decline in global commodity prices such as crude oil. The effects of these events have been felt in the global economy and by financial institutions in particular, and have placed strains on funding markets at times when many financial institutions had material funding needs. Any further adverse developments in the global economy could have an adverse impact on its business, results of operations, financial condition and prospects.

Within its Wealth & Investment business, the Bank earns fixed fees as a percentage of assets under management, as well as commissions earned for executing transactions for clients. Accordingly, its results of operations are influenced by fluctuations in the market value of assets under management. A large portion of the Bank's total assets under management comprised equity securities. Therefore, its fee and commission income is vulnerable to fluctuations in equity markets since a reduction in the value of equities would contribute to a reduction in the value of assets under management, and therefore a reduction in fee and commission income. Although the majority of the investment mandates for the Bank's clients are based on a long-term approach to investment through market cycles, significant volatility in securities markets

may result in equities and funds becoming less attractive investments for the Bank's clients. Deterioration in equity or other securities markets may therefore make it harder for the Bank to attract new clients or could potentially result in clients withdrawing a portion or all of the assets in their portfolios.

Revenues from the Specialist Banking business are also sensitive to market volatility. Deterioration in the financial markets and general economic activity has in the past affected, and will continue to affect levels of private client activity. The Bank's investment banking and corporate banking income is directly related to the number and size of the transactions in which the Bank participates and general corporate and institutional activity. Accordingly, any reduction in the number and/or size of such transactions and a slowdown in corporate activity, whether occasioned by market volatility or otherwise, will adversely affect its results of operations. Moreover, some of the Specialist Banking income is derived from direct or principal investments or from the management of private equity portfolios. This income is dependent upon the performance of the underlying investments and the ability to realise value upon exit from the investments and, as such, revenues, returns and profitability may fluctuate, impacting the Bank's results of operations. As a result of the foregoing factors, market volatility may have a material adverse effect on the Bank's business, results of operations, financial condition and prospects.

The Bank also maintains trading and investment positions in various financial and other assets, including equity, fixed income, currency and related derivative instruments and real estate. At any point in time these positions could be either long positions, such that the Bank will benefit from upward movements in the market prices of these assets, or short positions, such that it will benefit from downward movements in the market prices of these assets. Fluctuations in the value of equities, fixed income, currency and related derivative instruments and real estate, either absolutely or relative to other asset classes, could also adversely affect investor sentiment. These financial markets are sometimes subject to significant stress conditions where steep falls in perceived or actual asset values are accompanied by severe reductions in market liquidity. In dislocated markets, hedging and other risk management strategies may not be as effective as they are in normal market conditions. Market instability of this nature could result in the Bank incurring losses.

Social, political and economic risk outside of the Bank's control may adversely affect its business and results of operations.

Unfavourable economic, political, military and diplomatic developments producing social instability or legal uncertainty may affect both the performance and demand for the Bank's products and services. The Bank's businesses, results of operations and financial condition could be materially adversely affected by changes in government or the economic, regulatory or other policies of the governments of the jurisdictions in which the Bank operates. Among others, the actions of such governments in relation to employee relations, salaries, the setting of interest rates, or in relation to exerting controls on prices, exchange rates or local and foreign investment, may adversely affect the Bank's business and results of operations.

The result of the referendum held in the UK on 23 June 2016 was in favour of the UK leaving the European Union. The outcome of this referendum has led to some economic and political uncertainty and consequent market volatility. Such conditions may continue for some time and the consequences of the referendum and other subsequent political developments may affect the fiscal, monetary and regulatory landscape to which the Bank is subject.

The Bank faces risks associated with interest rate levels and volatility.

Interest rates, which are impacted by factors outside of the Bank's control, including the fiscal and monetary policies of the UK government and central bank, as well as UK and international political and economic conditions, affect the Bank's results of operations, profitability and return on capital in three principal areas: margins and income, cost and availability of funding and impairment levels.

In recent years, the UK has experienced historically low, sustained interest rates which has resulted in relatively low spreads being realised by the Bank between the rate it pays on customer deposits and the rate received on the loans, reducing the Bank's net interest income and net interest margin. Low interest rates may also reduce incentives for consumers to save and, therefore, could reduce the Bank's customer deposits, its principal source of funding. The Bank's business and financial performance and net interest income and margin may continue to be adversely affected by the continued low interest rate environment.

Increases in interest rates could also adversely affect the Bank. In an increasing interest rate environment, the Bank may be more exposed to re-pricing of its liabilities than competitors with higher levels of term deposits. In the event of sudden large or frequent increases in interest rates, the Bank also may not be able to re-price its floating rate assets and liabilities at the same time, giving rise to re-pricing gaps in the short term, which, in turn, could negatively affect its net interest margin and income.

Changes in interest rates could also impact the Bank's impairment loss levels and customer affordability. A rise in interest rates, without sufficient improvement in customer earnings or employment levels, could, for example, lead to an increase in default rates among customers with variable rate loans who can no longer afford their repayments, in turn leading to increased impairment charges and lower profitability for the Bank. A high interest rate environment also reduces demand for loan products generally, as individuals are less likely or less able to borrow when interest rates are high. In addition, there is a risk that a sudden rise in interest rates, or an expectation thereof, could encourage significant demand for fixed rate products. High levels of movement between products in a concentrated time period could put considerable strain on the Bank's business and operational capability, and it may not be willing or able to price its fixed rate products as competitively as others in the market. This could lead to high levels of customer attrition and, consequently, a negative impact on the Bank's profitability.

If the Bank is unable to manage its exposure to interest rate volatility, whether through hedging, product pricing or by other means, its business, results of operations, financial condition and prospects could be materially adversely affected.

Fluctuations in exchange rates could have an adverse impact on the Bank's results of operations.

A proportion of the Bank's operations are conducted by entities outside the UK. The results of operations and the financial position of individual companies are reported in the local currencies of the countries in which they are domiciled, including Euro, US Dollars and Australian Dollars. These results are then translated into pounds sterling at the applicable foreign currency exchange rates for inclusion in the Bank's financial statements.

The Bank is also subject to currency risk in respect of its trading activities, which it conducts through its Specialist Banking business, both in relation to client flows and balance sheet management.

Exchange rates between local currencies and pounds sterling have fluctuated during recent periods. These fluctuations could have an adverse impact on the Bank's results of operations.

The Bank faces risks related to volatility in the value of UK real estate.

UK house prices influence the value of the Bank's mortgage portfolio. A decline in house prices in the UK could lead to a reduction in the recovery value of real estate assets held as collateral in the event of a customer default, and could lead to higher impairment losses, which could reduce the Bank's capital and profitability as well as its ability to engage in lending and other income-generating activities. A significant increase in house prices over a short period of time could also have a negative impact on the Bank by reducing the affordability of homes for buyers, which could lead to a reduction in demand for new mortgages. Sustained volatility in house prices could also discourage potential homebuyers from committing to a purchase, thereby limiting the Bank's ability to grow its mortgage portfolio.

In addition, the Bank's mortgage portfolio is concentrated in London and surrounding areas. The Bank has benefited from the fact that in London, prime residential property has been regarded as a preferred outlet for international capital, and residential property price growth has been largely sustained in recent years, in part due to continued growth in the buy-to-let market. Residential property prices in the South East of England generally also have been more resilient to macroeconomic pressures compared to other regions of the UK. However, there can be no assurance that real estate price growth will continue in these areas.

The UK government's intervention into the housing market, both directly through buyer assistance schemes and indirectly through the provision of liquidity to the banking sector under the Bank of England and HM Treasury's Funding for Lending scheme ("FLS"), may also contribute to volatility in house prices. This could occur, for example, as a result of any sudden end to buyer assistance schemes in the future, which could lead to a decrease in house prices, or due to their continuation, which would maintain excess funding liquidity in the mortgage market which has supported a low mortgage interest rate environment, and which could lead to inflation in house prices. The impact of these and any other initiatives on the UK housing market and other regulatory changes or UK Government programmes is difficult to predict. Volatility in the UK housing market occurring as a result of these changes, or for any other reason, could have a material adverse effect on the Bank's business, results of operations, financial condition and prospects.

The response of governments and regulators to instability in the global financial markets may not be effective.

In times of economic instability, governments and regulators are faced with pressure from a variety of sources, including market participants, the media, investor organisations and others, to reform the existing financial and regulatory system. There can be no guarantee that the response of governments and regulators in the jurisdictions in which the Bank operates, and the reforms proposed thereby, will be effective or that the timing of responses (which might otherwise have been effective) will be appropriate. In addition, any such measures taken may negatively impact the Bank's business even when they achieve their policy goals. In the past, governments and regulators in some jurisdictions have responded to pressure of the kind referred to above by greatly increasing regulation. Reforms which increase the compliance and reporting burdens of role-players in the financial markets space can have unintended effects on the environment within which such role-players operate. There can be no guarantee that the governments and regulators in the jurisdictions in which the Bank operates will not make policy decisions to implement reforms which increase the burdens faced by the Bank in relation to compliance and reporting. This could increase the costs the Bank has to devote to compliance and reporting and, in turn, could have a negative effect on the Bank's financial condition and results of operations.

Government support of the finance and banking industry may have a disproportionate effect on some and an unintended effect on other participants in that industry.

The actions of some governments, providing support to certain participants in the finance and banking industry (whether explicitly or implicitly), have had and will continue to have a fundamental effect on the finance and banking industry. Whether such actions have had a positive effect on the industry as a whole and/or the wider economy, there is a risk that those participants in the industry who have not received such government support, including the Bank, may have been and may continue to be disadvantaged. For example, it is possible that those banks which have not received the support of governments may be perceived by potential clients as lacking stability. Such a perception may lead to a loss of clients by smaller participants in the industry, including the Bank, if clients, for example, take deposits to an institution perceived to be more secure. If this were to occur, the Bank's, results of operations, financial condition and prospects may be adversely affected.

Terrorist acts and other acts of war could have a negative impact on the business and results of operations of the Bank.

Terrorist acts, other acts of war or hostility and responses to those acts may create economic and political uncertainties, which could have a negative impact on global economic conditions generally and may directly affect the countries in which the Bank operates, and more specifically on the business and results of operations of the Bank in ways that cannot be predicted.

Risks relating to the Bank's Wealth & Investment business

Poor investment performance relative to competitors and applicable benchmarks or a deterioration in the Bank's Wealth & Investment services could lead to a loss of assets under management and a decline in operating profit.

The success of relevant investment strategies ("**investment performance**") is an important factor for the maintenance and growth of assets under management across the Bank's Wealth & Investment business. If the Bank's Wealth & Investment business were to experience poor investment performance over a prolonged period, affected clients (or clients generally) might decide to reduce their investments or withdraw funds altogether in favour of better performing services or competing investment managers, which would lead to a direct reduction in the level of the Bank's assets under management and, as a result, lower fee and commission income. Furthermore, during a period of significant poor investment performance, the Bank's reputation and brand, which have in part been built around its strong investment performance, may deteriorate. As a result, its ability to attract funds from existing and new clients might diminish, particularly given the competitive nature of the wealth management market.

In addition to investment performance, the directors believe that the quality of the services it delivers and the relationships it develops with clients are among the key factors for the maintenance and growth of its assets under management. The Bank's investment managers are central to its relationships with its clients and play a key role in enabling the Bank's Wealth & Investment business to earn the long-term trust of its client base. However, client complaints regarding dissatisfaction with the services they receive from their investment managers or the Bank generally, including in relation to general administration of their investments, could ultimately lead to the withdrawal of client investments and a reduction in the Bank's assets under management.

The occurrence of any of the foregoing could have a material adverse effect on the Bank's business, results of operations, financial condition and prospects.

The Bank's Wealth & Investment business may lose clients or may experience withdrawals of assets under management at short or no notice, which would result in the loss of assets under management and lower fee and commission income.

The Bank's arrangements with its Wealth & Investment clients are generally terminable without cause and at any time without notice. Clients may decide to withdraw a portion or all of the assets managed by the Bank, or transfer their investments to another provider of wealth management services, for various reasons. A reduction in the value of assets under management would lead to an immediate impact on the Bank's fee and commission income and therefore on operating profit. Significant withdrawals of assets under management or transfers of client assets could have a material adverse effect on the Bank's business, results of operations, financial condition and prospects.

Changes in distribution trends, in particular in relation to financial advisers, may have a material adverse effect on the Bank's Wealth & Investment business.

Financial intermediaries are one of the distribution channels for the Wealth & Investment business. In particular, it relies on independent financial advisers, who may retain responsibility for specific aspects of the overall service provided to the client, such as the recording of "know your customer" information and the suitability of the investment mandate. Although the Bank has undertaken various steps to expand and deepen its financial adviser relationships and networks, there can be no assurance that its efforts will be successful. In particular, many of the Bank's competitors are working to expand and deepen their own financial adviser relationships

and networks. As competition expands among wealth management firms for business from financial adviser introductions, the Bank may be unable to maintain its key financial adviser relationships or grow the amount of new business it generates from financial adviser introductions.

Changes in distribution trends may also lead to the emergence of new competitors. For example, the increasing popularity of internet investing systems and platforms in recent years has led to the growth of investment managers offering simplified investment management services to the mass affluent investor market, often targeting self-directed investors. In recent years, this trend towards self-directed investments in certain segments of the market has intensified. In many cases, investment managers have focused their services on the development of low-cost, simplified investment models in order to target this segment of the investor market. Although the Bank is investing in a digital distribution channel, as internet platforms and similar distribution channels become more prevalent, there can be no assurance that the Bank's clients will not transfer their investments to these types of investment management firms, or that it will be able to successfully compete with them for new clients.

A loss of the Bank's relationships with particular intermediaries, or the emergence of competitors through new or developing distribution channels, could result in a reduction in the Bank's assets under management and could have a material adverse effect on its business, results of operations, financial condition and prospects.

The wealth management industry in which the Bank operates in intensely competitive.

Within the Wealth & Investment business, the Bank's principal competitors are international and UK based wealth management firms, for example Rathbones, Brewin Dolphin, Davy and Goodbody, along with certain private banks. It also competes with trust and fiduciary companies. Some of these competitors have proprietary products and distribution channels that make it more difficult for the Bank to compete with them. In addition, the wealth management industry has experienced periods of significant consolidation as numerous wealth management firms have either been acquired by other financial services firms or ceased operations. Furthermore, a number of entrants, including commercial banks and foreign entities, have made investments in and acquired wealth management firms. If clients and potential clients decide to use the services of competitors, this could result in growth in assets under management slowing or in net client outflows. Any of the foregoing factors could have a material adverse effect on the Bank's business, results of operations, financial condition and prospects.

Risks relating to the Specialist Banking business

The Bank is subject to risks concerning customer and counterparty credit quality.

Credit and counterparty risk is defined as the risk arising from an obligor's (typically a client's or counterparty's) failure to meet the terms of any agreement. Credit and counterparty risk arises when funds are extended, committed, invested, or otherwise exposed through contractual agreements, whether reflected on- or off-balance sheet.

Credit and counterparty risk arises primarily from three types of transactions:

- Lending transactions through loans and advances to clients and counterparties creates the risk that an obligor will be unable to unwilling to repay capital and/or interest on loans and advances granted to them. This category includes bank placements, where the Bank has placed funds with other financial institutions;
- Issuer risk on financial instruments (for example, corporate bonds) where payments due from the issuer of a financial instrument may not be received;
- Trading transactions, giving risk to settlement and replacement risk, which is collectively referred to as counterparty risk. Settlement risk is the risk that the settlement of a transaction does not take place as expected. Replacement risk is

the financial cost of having to enter into a replacement contract with an alternative market counterparty following default by the original counterparty.

The Bank's credit risk arises primarily in relation to its Specialist Banking business, through which it offers products such as private client mortgages and specialised lending to high income professionals and high net worth individuals and a range of lending products to corporate clients, including corporate loans, asset based lending, fund finance, asset finance, acquisition finance, power and infrastructure finance, resource finance and corporate debt securities. Within its Wealth & Investment business, the Bank is subject to relatively limited settlement risk which can arise due to undertaking transactions in an agency capacity on behalf of clients.

Credit and counterparty risks can be impacted by country risk where cross-border transactions are undertaken. This can include geopolitical risks, transfer and convertibility risks and the impact on the borrower's credit profile due to local and economic political conditions.

In accordance with policies overseen by its Central Credit Management department, the Bank makes provision for specific impairments and calculates the appropriate level of portfolio impairments in relation to the credit and counterparty risk to which it is subject. This process requires complex judgements, including forecasts of how changing macro-economic conditions might impair the ability of customers to repay their loans. The Bank may fail to adequately identify the relevant factors or accurately estimate the impact and/or magnitude of identified factors. Further, despite the Bank having conducted an accurate assessment of customer credit quality, customers may be unable to meet their commitments as they fall due as a result of customer-specific circumstances, macro-economic disruptions or other external factors. The failure of customers to meet their commitments as they fall due may result in higher impairment losses. Increased credit and counterparty risk could have a material adverse impact on the Bank's business, results of operations, financial condition and prospects.

Concentration of credit risk could increase the Bank's potential for significant losses.

The Bank is subject to concentration risk, which arises when large exposures exist to a single client or counterparty, group of connected counterparties or to a particular geography, asset class or industry. Concentration risk can also exist where a portfolio of loan maturities is clustered within a single period of time. While the Bank's loan book remains well diversified, geographical concentration in its loan book may pose risks. In the event of a disruption to the credit markets in the geographies in which the Bank operates (particularly the UK) or the emergence of adverse economic conditions in any of those geographies, including in relation to interest rates and unemployment levels, this concentration of credit risk could cause the Bank to experience greater losses than its competitors. While the Bank regularly monitors its loan book to assess potential concentration risk, efforts to divest, diversify or manage its loan book against concentration risks may not be successful and could result in an adverse effect on the Bank's business, results of operations, financial condition and prospects.

The Bank is subject to liquidity risk, which may impair its ability to fund its operations.

Liquidity risk is the risk that the Bank has insufficient capacity to fund increases in its assets, or that it is unable to meet its payment obligations as they fall due, without incurring unacceptable losses. This includes repaying depositors and repayments of wholesale debt. This risk is inherent in all banking operations and can be impacted by a range of institution-specific and market-wide events. Liquidity risk can be further broken down into:

- Funding liquidity, which relates to the risk that the Bank will be unable to meet current and/or future cash flow or collateral requirements in the normal course of its business, without adversely affecting its financial position or reputation; and
- Market liquidity, which relates to the risk that the Bank may be unable to trade in specific markets or that it may only be able to do so with difficulty due to market disruptions or a lack of market liquidity.

Sources of liquidity risk include:

- Unforeseen withdrawals of deposits;
- Restricted access to new funding with appropriate maturity and interest rate characteristics;
- Inability to liquidate a marketable asset in a timely manner with minimal risk of capital loss;
- Unpredicted customer non-payment of loan obligations; and
- A sudden increased demand for loans in the absence of corresponding funding inflows of appropriate maturity.

The Bank relies on its private client base as the principal source of stable and well diversified funding for its risk assets. Its primary source of funding is customer deposits. Growth in the Bank's lending activities will therefore depend in part on the availability of customer deposit funding on acceptable terms, for which there may be increased competition, which is dependent on a variety of factors outside the Bank's control. These factors include general macro-economic conditions and market volatility and confidence of retail depositors in the economy. Increases in the cost of customer deposit funding will adversely affect the Bank's net interest margin and a lack of availability of customer deposit funding could have a material adverse effect on the Bank's growth.

While the Bank does not currently rely heavily on wholesale funding (i.e. borrowing from other banks and financial institutions), it may need to access wholesale markets where there is a residual funding requirement over and above funds held from customer deposits. If the wholesale funding markets were to be fully or partially closed, it is likely that wholesale funding would prove more difficult to obtain on commercial terms, which could have a material adverse effect on the Bank's growth. Significant curtailments of central bank liquidity to the financial markets in connection with other market stresses might also have a material adverse effect on the Bank's financial position depending on the Bank's liquidity position at that time.

The Capital Requirements Directive IV 2013/36/EU (as implemented in the UK through applicable regulatory rules which will be set out in the PRA Rulebook and other PRA publications) and the Capital Requirements Regulation ("CRR" and together "CRD IV") requires the Bank to meet targets set for the Basel III liquidity related ratios. These include the liquidity coverage ratio ("LCR"), which will require banks to have sufficient high quality liquid assets to withstand a 30-day stressed funding scenario, and the net stable funding ratio ("NSFR"), which is a long-term structural ratio designed to address liquidity mismatches. As at 31 March 2016, the Bank's LCR and NSFR ratios are within the CRD IV requirements that will apply from 1 January 2018. Nevertheless, meeting the phased implementation deadlines of these requirements could impose additional costs on the Bank and the failure to demonstrate appropriate progress towards or to meet such phased requirements may lead to regulatory sanctions. Any failure to manage its liquidity position or to meet the LCR and NSFR requirements could have a material adverse effect on the Bank's business, results of operations, financial condition and prospects.

The Bank may have insufficient capital in the future and may be unable to secure additional financing when it is required.

The prudential regulatory capital and liquidity requirements applicable to banks have increased significantly over the last decade, largely in response to the financial crisis that commenced in 2008 but also as a result of continuing work undertaken by regulatory bodies in the financial sector subject to certain global and national mandates. These prudential requirements are likely to increase further in the short term, not least in connection with ongoing implementation issues, and it is possible that further regulatory changes may be implemented in this area in any event.

The prudential regulatory capital and liquidity requirements to which the Bank is subject are primarily set out in CRD IV. The Bank is also subject to additional requirements imposed by the PRA to the extent not inconsistent with CRD IV. In addition, CRD IV requirements adopted in

the UK or the way those requirements are interpreted or applied may change, including as a result of binding regulatory or implementing technical standards or guidance to be developed by the European Banking Authority (the “EBA”), changes to the way in which the PRA interprets and applies these requirements to UK banks or further changes to CRD IV agreed by EU legislators. The Bank is subject to substantial and changing prudential regulation, including requirements to maintain adequate capital resources and to satisfy specified capital ratios.

The Bank sets its internal target amount of capital and liquidity based on PRA guidance and following an assessment of its risk profile, market expectations and regulatory requirements in relation to both capital and liquidity. The Bank may experience a depletion of its capital resources through increased costs or liabilities incurred as a result of the crystallisation of any of the other risks described in this document. If, for example, market expectations as to capital levels increase, driven by, for example, the capital levels or targets among peer banks, or if new regulatory requirements are introduced, the bank may experience pressure to increase its capital ratios.

If the Bank fails to meet its minimum regulatory capital or liquidity requirements, it may be subject to administrative actions or sanctions. In addition, a shortage of capital or liquidity could affect the Bank’s ability to pay liabilities as they fall due, pay future dividends and distributions, and could affect the implementation of its business strategy, impacting future growth potential. If, in response to any capital shortage, the Bank raises additional capital through the issuance of share capital or capital instruments, shareholders may experience a dilution of their holdings or reduced profitability and returns. Any inability of the Bank to maintain its regulatory capital or liquidity requirements, or any legislative changes that limit the Bank’s ability to manage its capital effectively may have a material adverse effect on the Bank’s business, results of operations, financial condition and prospects.

The Bank's borrowing costs and access to the debt capital markets depend significantly on its credit ratings.

Rating agencies, which determine the Bank’s own credit ratings and thereby influence the Bank’s cost of funds, take into consideration management effectiveness and the success of the Bank’s risk management processes. Rating agencies have, in the past, altered their ratings of all or a majority of the participants in a given industry as a result of the risks affecting that industry or have altered the credit ratings of the Bank or instruments issued by the Bank specifically.

A reduction in the Bank’s long- or short-term credit ratings could increase its borrowing costs, limit its access to the capital markets and trigger additional collateral requirements in derivative contracts and other secured funding arrangements. Any further changes in the credit ratings of the Bank could negatively impact the volume and pricing of the Bank’s funding, which could in turn have a material adverse effect on its business, results of operations, financial condition and prospects.

The financial services industry in which the Bank operates is intensely competitive.

The financial services industry is intensely competitive and the Bank faces substantial competition in all aspects of its Specialist Banking business. Given that its activities are focused on niche areas within the banking industry, the Specialist Banking business does not have any peers that have a directly comparable business model. However, it faces competition within these areas from large high street banks such as HSBC, Barclays, NatWest and Lloyds, as well as providers of private banking for the ultra-high net worth market, including Goldman Sachs, Coutts, JPMorgan, Cater Allen, Credit Suisse and UBS. These banks may have greater resources, broader product offerings and more extensive distribution networks than the Bank. The Bank also faces competition in the UK from new entrants to the market, including from banking businesses developed by large non-financial companies, such as Tesco and Virgin Money, or from new entrants such as Aldermore and MetroBank. Increasing pressure faced by the Bank from these banks, as well as mainstream banks returning to the market, has adversely affected its margins. If the Bank is unable to manage this competition, its ability to retain its

clients and continue to attract deposits may be compromised, which could have a material adverse effect on its business, results of operations, financial condition and prospects.

Additional risks relating to the Bank

Certain financial instruments are recorded at fair value under relevant accounting rules. To determine fair value, the Bank uses financial models which require it to make certain assumptions and judgements and estimates which may change over time

Under IFRS, the Bank is required to carry certain financial instruments on its balance sheet at fair value, including, among others, trading assets (which include certain retained interests in loans that have been securitised), available-for-sale securities and derivatives. Generally, in order to establish the fair value of these instruments, the Bank relies on quoted market prices or internal valuation models that utilise observable market data. In certain circumstances and over the last year in particular, however, the ability of the Bank and other financial institutions to establish fair values has been influenced by the lack of readily available observable market prices and data and the fact that the availability or reliability of such information has diminished due to market conditions. Furthermore, in common with other financial institutions, the Bank's processes and procedures governing internal valuation models are complex and require the Bank to make assumptions, judgements and estimates in relation to matters that are inherently uncertain, such as expected cash flows from a particular asset class, the ability of borrowers to service debt, house price appreciation and depreciation, and relative levels of defaults and deficiencies. Such assumptions, judgements and estimates may need to be updated to reflect changing trends in relation to such matters. To the extent the Bank's assumptions, judgements or estimates change over time in response to market conditions or otherwise, the resulting change in the fair value of the financial instruments reported on the Bank's balance sheet could have a material adverse effect on the Bank's earnings.

Financial instruments are valued differently under relevant applicable accounting rules depending upon how they are classified. For example, assets classified as held-to-maturity are carried at cost (less provisions for permanent impairment) while trading assets are carried at fair value. Similar financial instruments can be classified differently by a financial institution depending upon the purpose for which they are held and different financial institutions may classify the same instrument differently. In addition, financial institutions may use different valuation methodologies which may result in different fair values for the same instruments.

Accordingly, the Bank's carrying value for an instrument may be materially different from another financial institution's valuation of that instrument or class of similar instruments.

Furthermore, a fair value determination does not necessarily reflect the value that can be realised for a financial instrument on a given date. As a result, assets and liabilities carried at fair value may not actually be able to be sold or settled for that value. If such assets are ultimately sold or settled for a lower or greater value, the difference would be reflected in a write-down or gain. The difference between the fair value determined at a particular point in time and the ultimate sale or settlement value can be more pronounced in volatile market conditions or during periods when there is only limited trading of a particular asset class from which to establish fair value. This can result in a significant negative impact on the Bank's financial condition and results of operations due to an obligation arising to revalue assets at a fair value significantly below the value at which the Bank believes it could ultimately be realised.

Operational risk may disrupt the Bank's business or result in regulatory action

Operational losses can result, for example, from fraud, errors by employees, failure to document transactions properly or to obtain proper authorisation, failure to comply with regulatory requirements and conduct of business rules, equipment failures, natural disasters or the failure of systems and controls, including those of the Bank's suppliers or counterparties. Although the Bank has implemented risk controls and loss mitigation actions, and substantial resources are devoted to developing efficient procedures, reporting systems and to staff training, it is not possible to be certain that such actions have been or will be effective in controlling each of the operational risks faced by the Bank. Notwithstanding anything contained in this risk factor, this

risk factor should not be taken as implying that the Bank will be unable to comply with its regulatory obligations.

Any operational failure may cause serious reputational or financial harm and could have a material adverse effect on the Bank's results or operations, reputation and financial condition.

The Bank's risk management policies and procedures may leave it exposed to risks which have not been identified by such policies or procedures.

The Bank has devoted significant resources to developing its risk management policies and procedures, particularly in connection with credit, liquidity, market and other banking risks, and expects to continue to do so in the future. Nonetheless, its risk management techniques may not be fully effective in mitigating its risk exposure in all market environments or against all types of risk. Some of the Bank's methods of managing risk are based upon its use of observed historical market behaviour. As a result, these methods may not predict future risk exposures, which could be significantly greater than historical measures indicate. Other risk management methods depend upon evaluation of information regarding the markets in which the Bank operates, its clients or other matters that are publicly available or otherwise accessible by the Bank. This information may not be accurate in all cases, complete, up-to-date or properly evaluated. Any failure of the Bank's risk management techniques may have a material adverse effect on its results of operations and financial condition.

The Bank may be vulnerable to the failure of its systems and breaches of its security systems.

The Bank relies on the proper functioning of its information and operating systems which may fail as a result of hardware or software failure or power or telecommunications failure. The occurrence of such a failure may not be adequately covered by its business continuity planning. Any significant degradation, failure or lack of capacity of the Bank's information systems or any other systems in the trading process could therefore cause it to fail to complete transactions on a timely basis, could have an adverse effect on its business, results of operations, financial condition and prospects or could give rise to adverse regulatory and reputational consequences for the Bank's business.

The secure transmission of confidential information is a critical element of the Bank's operations. The Bank's networks and systems may be vulnerable to unauthorised access and other security problems. In particular, as a financial institution, the Bank is subject to a heightened risk that it will be the target of criminal activity, including fraud, theft or cybercrime. For example, the Bank is exposed to potential losses due to breaches of its terms of business by its customers (e.g., through the use of a false identity to open an account) or by customers engaging in fraudulent activities, including the improper use of legitimate customer accounts. There also can be no assurance that the Bank's systems will not be subject to attack by cybercriminals, including through denial of service attacks, which could significantly disrupt the Bank's operations. The Bank cannot be certain that its existing security measures will prevent security breaches, including break-ins, viruses or disruptions. Persons that circumvent the security measures could use the Bank's or its clients' confidential information wrongfully which could expose it to a risk of loss, adverse regulatory consequences or litigation.

The Bank's future success will depend in part on its ability to respond to changing technologies and demands of the market place. The Bank's failure to upgrade its information and communications systems on a timely or cost-effective basis could damage its relationships with its clients and counterparties and could have a material adverse effect on its business, results of operations, financial conditions and prospects.

Failing infrastructure systems may negatively impact the economy generally and the business and results of operations of the Bank

Events such as electricity supply failures, the shut-down of transport systems due to inclement weather (such as snow, flash floods, cyclones or extreme heat) or postal, transport or other strikes have a negative impact on the ability of most role-players, including the Bank, to do

business. The regular occurrence of such events or timing of the occurrence of such events could have an adverse effect on the Bank's operations.

The Bank may be unable to recruit, retain and motivate key personnel

The Bank's performance is largely dependent on the talents and efforts of key personnel, many of whom have been employed by the Bank for a substantial period of time and have developed with the business. In addition, while the Bank is covered by a general director's and officer's insurance policy, it does not maintain any "key man" insurance in respect of any management employees. Competition in the financial services industry for qualified employees is intense. Further, the Bank's ability to implement its strategy depends on the ability and experience of its senior management and other key employees. The loss of the services of certain key employees, particularly to competitors, could have a negative impact on the Bank's business.

The Bank's continued ability to compete effectively and further develop its businesses depends on its ability to retain, remunerate and motivate its existing employees and to attract new employees and qualified personnel competitively with its peers.

The Bank may be adversely affected if its reputation is harmed

The Bank is subject to the risk of loss due to customer or staff misconduct. The Bank's ability to attract and retain customers and employees and raise appropriate financing or capital may be adversely affected to the extent its reputation is damaged. If it fails to deal with various issues that may give rise to reputational risk, its reputation and in turn its business prospects may be harmed. These issues include, but are not limited to, appropriately dealing with potential conflicts of interest, legal and regulatory requirements, customer management and communication, discrimination issues, money-laundering, privacy, record-keeping, sales and trading practices, and the proper identification of the legal, reputational, credit, liquidity and market risks inherent in its business. Failure to address these issues appropriately could give rise to litigation and regulatory risk to the Bank.

There have been a number of highly publicised cases involving fraud or other misconduct by employees of financial services firms in recent years. The Bank's reputation could be damaged by an allegation or finding, even where the associated fine or penalty is not material. Misconduct could include hiding unauthorised activities from the Bank, improper or unauthorised activities on behalf of customers, improper use of confidential information or use of improper marketing materials. The Bank has systems and controls in place to prevent and detect misconduct; however, the risks posed by misconduct may not be entirely eliminated through controls.

The Bank may be exposed to pension risk.

Pension risk arises from obligations arising from defined benefit pension schemes, where the Bank is required to fund any deficit in the schemes. There are two defined benefit pension schemes within the Bank and both are closed to new business. Pension risk arises if the net present value of future cash outflows is greater than the current value of the asset pool set aside to cover those payments. The primary sources of pension risk include:

- A mismatch in the duration of the assets relative to the liabilities of the pension schemes;
- Market-driven asset price volatility; and
- Increased life expectancy of individuals leading to increased liabilities.

As a result of these factors, the Bank faces the risk that the funding position of the schemes will deteriorate to such an extent that it would may be required to make additional contributions above what is already planned to cover its pension obligations. Any failure by the Bank to manage its pension deficit could have a material adverse effect on its business, results of operations, financial condition and prospects.

The Bank is subject to conduct risk, including the risk that it treats its customers unfairly and delivers inappropriate outcomes and the risk of conducting itself negatively in the market.

The Bank is exposed to conduct risk, including retail conduct risk and wholesale conduct risk. Retail conduct risk is the risk that the Bank treats its customers unfairly and delivers inappropriate outcomes. Wholesale conduct risk is the risk of conducting itself negatively in the market. Certain aspects of the Bank's business may be determined by regulators in various jurisdictions or by courts not to have been conducted in accordance with applicable local or, potentially, overseas laws and regulations, or in a fair and reasonable manner. If the Bank fails to comply with any relevant laws or regulations, it may suffer reputational damage and may become subject to challenges by customers or competitors, or sanctions, fines or other actions imposed by regulatory authorities.

Changes in laws or regulations may also vastly change the requirements applicable to the Bank in a short period of time and/or without transitional arrangements. In particular, in the UK, the FCA released on 10 June 2014 a new policy statement PS14/9: Review of the client assets regime for investment business (the "**Policy Statement**"), which makes changes to the rules in the Client Assets sourcebook ("**CASS**") which came into effect in three stages over the 18 months following the release. The changes to the CASS regime included revisions to client money rules for investment firms and substantial amendments to the custody rules. These changes have resulted in additional costs for the Bank in order to achieve compliance with the new regime. The introduction of the Foreign Account Tax Compliance Act ("**FATCA**") by the US Internal Revenue Service in 2010 has also resulted in additional costs for the Bank. If the Bank is unable to manage any of the foregoing risks, its business, results of operations, financial condition and prospects could be materially adversely affected.

Risks relating to the Bank's fiscal, legal and regulatory compliance

Legal and regulatory risks are substantial in the Bank's businesses

Substantial legal liability or a significant regulatory action against the Bank could have a material adverse effect or cause significant reputational harm to the Bank, which, in turn, could seriously harm the Bank's business prospects and have an adverse effect on its results of operations and financial condition.

Legal liability

The Bank faces significant legal risks, and the volume and amount of damages claimed in litigation against financial intermediaries generally is increasing. These risks include potential liability under securities or other laws for materially false or misleading statements made in connection with the sale of securities and other transactions, potential liability for advice the Bank provides to participants in corporate transactions and disputes over the terms and conditions of complex trading arrangements. The Bank also faces the possibility that counterparties in complex or risky trading transactions will claim that the Bank improperly failed to inform them of the risks or that they were not authorised or permitted to enter into these transactions with the Bank and that their obligations to the Bank are not enforceable.

In those parts of the Bank's business that are focused on the provision of portfolio management and stockbroking services, the Bank is exposed to claims that it has recommended investments that are inconsistent with a client's investment objectives or that it has engaged in unauthorised or excessive trading, including in connection with split capital investment trusts. The Bank is also exposed to claims from dissatisfied customers as part of the increased trend of performance-related litigation, for example, in association with its operations relating to the provision of wealth management advice. The Bank may also be subject to claims arising from disputes with employees for, among other things, alleged discrimination or harassment. These risks may often be difficult to assess or quantify and their existence and magnitude often remain unknown for substantial periods of time. Liability resulting from any of the foregoing or other

claims could have a material adverse effect on the Bank's results of operations and financial condition.

These issues require the Bank to deal appropriately with, *inter alia*, potential conflicts of interest; legal and regulatory requirements; ethical issues; anti-money laundering laws or regulations; privacy laws; information security policies; sales and trading practices; and conduct by companies with which it is associated. Failure to address these issues appropriately may give rise to additional legal and compliance risk to the Bank, with an increase in the number of litigation claims and the amount of damages asserted against the Bank, or subject the Bank to regulatory enforcement actions, fines, penalties or reputational damage.

Applicable Bank Resolution Powers

The Bank, is subject to the Banking Act 2009 (the "**Banking Act**") which gives wide powers in respect of UK banks and their parent and other group companies to HM Treasury, the Bank of England, the Prudential Regulatory Authority and the UK Financial Conduct Authority (each a "**relevant Authority**") in circumstances where a UK bank has encountered or is likely to encounter financial difficulties. The Banking Act implements the provisions of Directive 2014/59/EU (the 'Bank Recovery and Resolution Directive' or "**BRRD**"). These powers include powers to: (a) transfer all or some of the securities issued by a UK bank or its parent, or all or some of the property, rights and liabilities of a UK bank or its parent (which would include the Securities), to a commercial purchaser or, in the case of securities, to HM Treasury or an HM Treasury nominee, or, in the case of property, rights or liabilities, to an entity owned by the Bank of England; (b) override any default provisions, contracts, or other agreements, including provisions that would otherwise allow a party to terminate a contract or accelerate the payment of an obligation; (c) commence certain insolvency procedures in relation to a UK bank; and (d) override, vary or impose contractual obligations, for reasonable consideration, between a UK bank or its parent and its group undertakings (including undertakings which have ceased to be members of the group), in order to enable any transferee or successor bank of the UK bank to operate effectively. The Banking Act also gives power to HM Treasury to make further amendments to the law for the purpose of enabling it to use the special resolution regime powers effectively, potentially with retrospective effect.

The powers granted to the relevant Authority under the Banking Act also include (but are not limited to) a "write-down and conversion of capital instruments" power and a "bail-in" power.

The write-down and conversion of capital instruments power may be used where the relevant Authority has determined that the institution concerned has reached the point of non-viability, but that no bail-in of instruments other than capital instruments is required (however the use of the write-down power does not preclude a subsequent use of the bail-in power) or where the conditions to resolution are met. Any write-down effected using this power must reflect the insolvency priority of the written-down claims – thus common equity must be written off in full before subordinated debt is affected. Where the write-down and conversion of capital instruments power is used, the write-down is permanent and investors receive no compensation (save that common equity tier 1 instruments may be required to be issued to holders of written-down instruments). The write-down and conversion of capital instruments power is not subject to the "no creditor worse off" safeguard.

The bail-in power gives the relevant Authority the power to cancel all or a portion of the principal amount of, or interest on, certain unsecured liabilities (which could include the Securities) of a failing financial institution or its holding company, and/or to convert certain debt claims (which could be amounts payable under the Securities) into another security, including ordinary shares of the surviving entity, if any and/or to amend or alter the terms of such claims, including the maturity of the Securities or amendment of the amount of interest payable on the Securities, or the date on which interest becomes payable, including by suspending payment for a temporary period. The Banking Act requires the relevant Authority to apply the "bail-in" power in accordance with a specified preference order which differs from the ordinary insolvency order. In particular, the relevant Authority must write-down or convert debts in the following order: (i) additional tier 1, (ii) tier 2, (iii) other subordinated claims and (iv) eligible senior claims. As a result, subordinated Securities which qualify as capital instruments may be fully or partially

written down or converted even where other subordinated debt that does not qualify as capital is not affected. This could effectively subordinate such Securities to the Bank's other subordinated indebtedness that is not additional tier 1 or tier 2 capital. The claims of some creditors whose claims would rank equally with those of the Securityholders may be excluded from bail-in. The more of such creditors there are, the greater will be the impact of bail-in on the Securityholders.

Although the exercise of the bail-in power under the Banking Act is subject to certain pre-conditions, there remains uncertainty regarding the specific factors (including, but not limited to, factors outside the control of the Bank or not directly related to the Bank) which the relevant Authority would consider in deciding whether to exercise such power with respect to the Bank and its securities (including the Securities). Moreover, as the relevant Authority may have considerable discretion in relation to how and when it may exercise such power, holders of the Bank's securities may not be able to refer to publicly available criteria in order to anticipate a potential exercise of such power and consequently its potential effect on the Bank and its securities.

As well as a "write-down and conversion of capital instruments" power and a "bail-in" power, the powers of the relevant Authority under the Banking Act include the power to (i) direct the sale of the relevant financial institution or the whole or part of its business on commercial terms without requiring the consent of the shareholders or complying with the procedural requirements that would otherwise apply, (ii) transfer all or part of the business of the relevant financial institution to a "bridge institution" (an entity created for such purpose that is wholly or partially in public control) and (iii) separate assets by transferring impaired or problem assets to one or more publicly-owned asset management vehicles to allow them to be managed with a view to maximising their value through eventual sale or orderly wind-down (this can be used together with another resolution tool only). In addition, the Banking Act gives the relevant Authority power to amend the maturity date and/or any interest payment date of debt instruments or other eligible liabilities of the relevant financial institution and/or impose a temporary suspension of payments and/or discontinue the listing and admission to trading of debt instruments.

The exercise by the relevant Authority of any of the above powers under the Banking Act (including especially the write-down and conversion of capital instruments power and the bail-in power) could lead to the holders of the Securities losing some or all of their investment. Moreover, trading behaviour in relation to the securities of the Bank (including the Securities), including market prices and volatility, may be affected by the use or any suggestion of the use of these powers and accordingly, in such circumstances, the Securities are not necessarily expected to follow the trading behaviour associated with other types of securities. There can be no assurance that the taking of any actions under the Banking Act by the relevant Authority or the manner in which its powers under the Banking Act are exercised will not materially adversely affect the rights of holders of the Securities, the market value of an investment in the Securities and/or the Bank's ability to satisfy its obligations under the Securities.

Although the BRRD also makes provisions for public financial support to be provided to an institution in resolution subject to certain conditions, it provides that the financial public support should only be used as a last resort after the relevant Authority has assessed and exploited, to the maximum extent practicable, all the resolution tools, including the bail-in power. Accordingly, it is unlikely that investors in the Securities will benefit from such support even if it were provided.

Financial Services Compensation Scheme

The UK Financial Services Compensation Scheme ("**FSCS**"), the UK's statutory fund of last resort, provides compensation to customers of UK authorised financial institutions in the event that an institution which is a participating member of the FSCS is unable, or is likely to be unable, to pay claims against it.

The FSCS raises annual levies from participating members to meet its management expenses and compensation costs. Individual participating members make payments based on their level of participation (in the case of deposits, the proportion that their protected deposits represent of total protected deposits) at 31 December of the year preceding the scheme year.

Following the default of a number of deposit-takers in 2008, the FSCS has borrowed from HM Treasury to fund the compensation costs for customers of those firms. Although the majority of this loan is expected to be repaid from funds the FSCS receives from asset sales, surplus cash flow or other recoveries in relation to the assets of the firms that defaulted, any shortfall will be funded by deposit-taking participants of the FSCS.

The Bank is a participating member of the FSCS and the Bank has accrued £1.65 million for its share of levies that will be raised by the FSCS. The accrual is based on estimates for the interest the FSCS will pay on the loan and estimates of the level of the Bank's market participation in the relevant periods. Interest will continue to accrue to the FSCS on the HM Treasury loan and will form part of future FSCS levies.

At the date of this Registration Document, it is not possible to estimate whether there will ultimately be additional levies on the industry, the level of Investec's market participation or other factors that may affect the amounts or timing of amounts that may ultimately become payable, nor the effect that such levies may have upon operating results in any particular financial period.

Other regulatory risks

The Bank is subject to extensive regulation by governmental and other regulatory organisations in the jurisdictions in which it operates around the world, including, in particular, the PRA and FCA in the UK.

In addition, the Bank is subject to extensive and increasing legislation, regulation, accounting standards and changing interpretations thereof in the various countries in which it operates. The requirements imposed by the Bank's regulators, including capital adequacy, are designed to ensure the integrity of financial markets and to protect customers and other third parties who deal with the Bank.

In addition, new laws are introduced and existing laws are amended from time to time, including tax, consumer protection, privacy and other legislation, which affect the environment in which the Bank operates. Governmental policies and regulatory changes in the other areas which could affect the Bank, include:

- the monetary, interest rate and other policies of central banks and regulatory authorities;
- general changes in government or regulatory policy or changes in regulatory regimes that may significantly influence investor decisions in particular markets in which the Bank operates or may increase the costs of doing business in those markets;
- other general changes in the regulatory requirements, such as prudential rules relating to the capital adequacy and liquidity framework;
- changes in competition and pricing environments;
- further developments in the financial reporting environment;
- further developments in the corporate governance, conduct of business and employee compensation environments;
- expropriation, nationalisation, confiscation of assets and changes in legislation relating to foreign ownership; and
- other unfavourable political or diplomatic developments or legal uncertainty which, in turn, may affect demand for the Bank's products and services.

Consequently, changes in these governmental policies and regulation may limit the Bank's activities, which could have an adverse effect on the Bank's results.

It is widely expected that as a result of recent interventions by governments in response to global economic conditions, there will be a substantial increase in government regulation and supervision of the financial services industry, including the imposition of higher capital requirements, heightened disclosure standards and restrictions on certain types of transaction structures. If enacted, such new regulations could significantly impact the profitability and results of firms operating within the financial services industry, including the Bank, or could require those affected to enter into business transactions that are not otherwise part of their preferred strategies, prevent the continuation of current lines of operations, restrict the type or volume of transactions which may be entered into or set limits on, or require the modification of, rates or fees that may be charged on certain loan or other products. Such new regulations may also result in increased compliance costs and limitations on the ability of the Bank or others within the financial services industry to pursue business opportunities.

Further changes to the regulatory requirements applicable to the Bank, in particular in the UK, whether resulting from recent events in the credit markets or otherwise, could materially affect its business, the products and services it offers and the value of its assets.

Tax-related risks

The Bank is subject to the substance and interpretation of tax laws in all countries in which it operates. A number of double taxation agreements entered into between countries also affect the taxation of the Bank.

Tax risk is the risk associated with changes in tax law or in the interpretation of tax law. It also includes the risk of changes in tax rates and the risk of consequences arising from failure to comply with procedures required by tax authorities. Failure to manage tax risks could lead to increased tax charges, including financial or operating penalties, for not complying as required with tax laws. Action by governments to increase tax rates or to impose additional taxes would reduce the profitability of the Bank. Revisions to tax legislation or to its interpretation might also affect the Bank's results in the future.

DOCUMENTS INCORPORATED BY REFERENCE

This Registration Document should be read and construed in conjunction with the following documents, which shall be incorporated in, and form part of, this Registration Document:

- (i) the annual report (including the auditors' report and audited consolidated annual financial statements) for the financial year ended 31 March 2015 of the Bank, which has previously been published and filed with the FCA (the "**2015 Annual Report**"); and
- (ii) the annual report (including the auditors' report and audited consolidated annual financial statements) for the financial year ended 31 March 2016 of the Bank, which has previously been published and filed with the FCA (the "**2016 Annual Report**"),

save that any statement contained herein or in a document which is incorporated by reference herein shall be modified or superseded for the purpose of this Registration Document to the extent that a statement contained in any supplementary prospectus published after the date of this Registration Document expressly or impliedly modifies or supersedes such earlier statement.

The documents incorporated by reference in this Registration Document have been published and filed with the FCA in the last 12 months and/or announced through the Regulatory News Service.

The documents incorporated by reference in this Registration Document shall not include any documents which are themselves incorporated by reference in such incorporated documents ("**daisy chained**" documents). Such daisy chained documents incorporated by reference in any of the financial statements listed above as being incorporated by reference in this Registration Document shall not form part of this Registration Document.

Copies of the documents incorporated by reference in this Registration Document can be obtained from (i) the registered office of the Bank and from the specified offices of Deutsche Bank AG, London Branch, which shall include any successor (the "**Paying Agents**"), and (ii) the website of the Regulatory News Service operated by the London Stock Exchange (the "**RNS**") at

<http://www.londonstockexchange.com/exchange/news/market-news/market-news-home.html>.

Neither the Bank nor any Agent accepts responsibility for the information appearing on any websites mentioned in this Registration Document. For the avoidance of doubt, the information appearing on any websites and pages does not form part of this Registration Document save to the extent expressly incorporated by reference herein.

BUSINESS DESCRIPTION OF THE BANK

All references in this section of this Registration Document to "**Bank**" and "**Issuer**" refer to Investec Bank plc, all references to "**Group**" refer to Investec Bank plc and its subsidiary undertakings and all references to "**Investec Group**" refer to Investec plc and Investec Limited.

Introduction

Investec plc and Investec Limited (together, the "**Investec Group**") is an international specialist bank and asset manager that provides a diverse range of financial products and services to a select client base in the UK and Europe, Australia/Asia and South Africa (*for more information, see pages 6-8 of the 2016 Annual Report*).

The Investec Group was founded as a leasing company in Johannesburg, South Africa, in 1974. It acquired a banking licence in 1980 and was listed on the JSE Limited South Africa ("**JSE**") in 1986.

In 1992 the Investec Group made its first international acquisition, in the UK, when it acquired Allied Trust Bank, which has since been renamed Investec Bank plc.

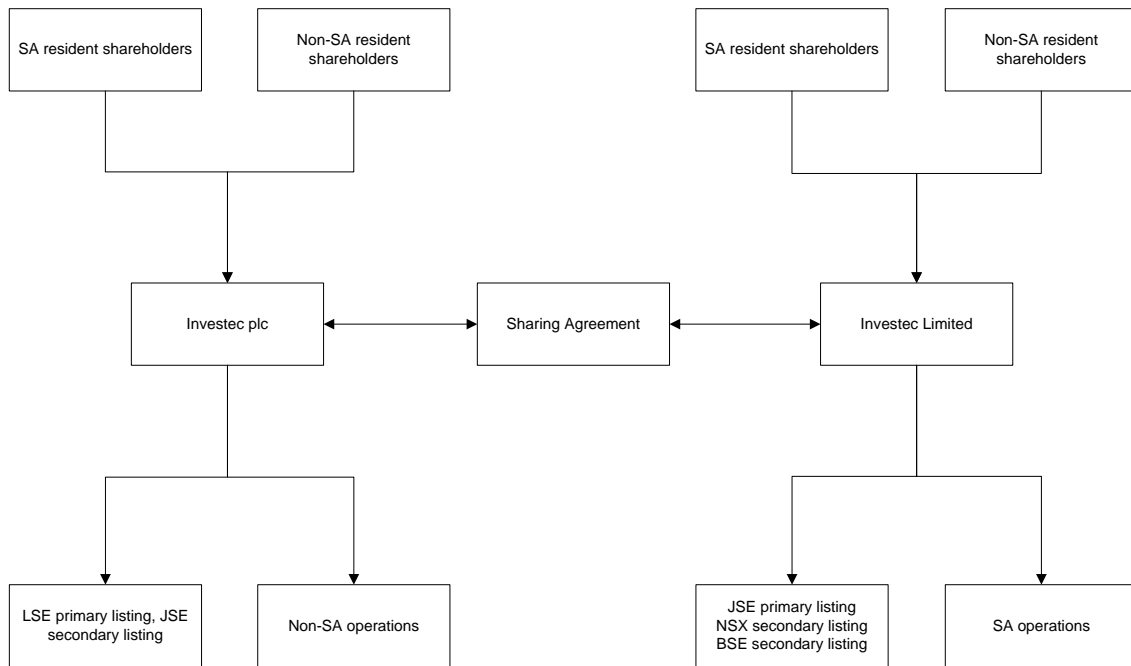
Group Structure

On 22 July 2002, the Investec Group implemented a dual listed companies ("**DLC**") structure pursuant to which the majority of the group's non-Southern African subsidiaries were placed into Investec plc, which was previously a wholly owned subsidiary of Investec Group Limited (now Investec Limited). Investec plc was unbundled from Investec Group Limited and listed on the London Stock Exchange, with a secondary listing on the JSE. As a result of the DLC structure, Investec plc and Investec Limited together formed a single economic enterprise (the Investec Group).

Creditors, however, are ring-fenced to either Investec plc or Investec Limited as there are no cross-guarantees between the companies (*for more information, see pages 6-8 of the 2016 Annual Report*).

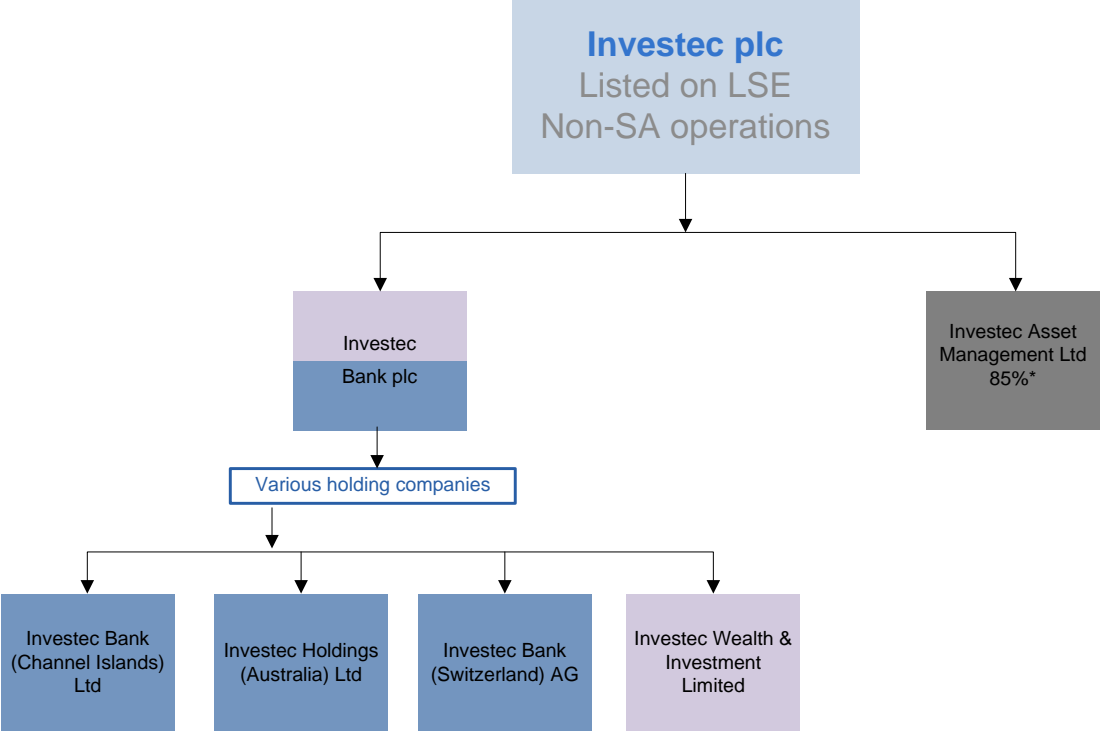
The Investec Group has since expanded through a combination of organic growth and a series of strategic acquisitions.

DLC structure



Investec plc is the holding company of the majority of the Investec Group's non-Southern African operations. The ultimate holding and controlling company of the Bank is Investec plc. The Bank holds certain of the Investec Group's UK-based assets and businesses, as well as holding Investec Holdings (Australia) Limited. The businesses of the Bank include Wealth & Investment and Specialist Banking. The following diagram is a simplified group structure for Investec plc.

Organisational structure as at 31 March 2016



Operating activities key:

- Wealth & Investment
- Asset Management
- Specialist Banking

Note: All shareholdings are 100% unless otherwise stated
 Only main operating subsidiaries are indicated
 * 15% is held by senior management in the company

Ratings

Investec Bank plc (IBP)		Definition
Moody's Investor Service Limited ("Moody's")		
Baseline credit assessment (BCA) and Adjusted BCA	baa2	Issuers assessed baa are judged to have medium-grade intrinsic, or standalone, financial strength, and thus subject to moderate credit risk.
Long-term rating	A2	Obligations rated A are judged to be upper-medium grade and are subject to low credit risk.
Short-term rating	Prime-1	Issuers assessed Prime-1 are judged to have a superior ability to repay short-term debt obligations.
Fitch Ratings Limited ("Fitch")		
Viability rating	Bbb	Reflects the fundamental creditworthiness, or standalone credit profile.
Support rating	5	Fitch's view of the likelihood of external support being made available in case of need.
Long-term rating	BBB	Fitch considers that expectations of default risk are currently low. The Issuer's capacity for payment of financial commitments is considered adequate but adverse business or economic conditions are more likely to impair this capacity.
Short-term rating	F2	A short-term issuer or obligation rating is based in all cases on the short-term vulnerability to default of the rated entity. F2 indicates good intrinsic capacity for timely payment of financial commitments.
Investec plc (holding company)		
Moody's Investor Service Limited ("Moody's")		
Long-term rating	Baa1	Obligations rated Baa are judged to be medium-grade and subject to moderate credit risk and as such may possess certain speculative characteristics.
Short-term rating	Prime-2	Issuers (or supporting institutions) rated Prime-2 have a strong ability to repay short-term obligations.

Each of Fitch and Moody's is a credit rating agency established and operating in the European Community and registered in accordance with Regulation (EU) No 1060/2009, as amended (the "**CRA Regulation**"). Global Credit Rating is not established in the European Economic Area and is not certified under the CRA Regulation.

Activities of the Bank

The businesses of the Bank include Wealth & Investment and Specialist Banking.

Wealth & Investment

Investec Wealth & Investment offers its clients comfort in its scale, international reach and depth of investment processes.

The European operations are conducted through Investec Wealth & Investment Limited in the UK, Investec Wealth & Investment Ireland, Investec Bank Switzerland and in Guernsey through Investec Wealth & Investment Channel Islands.

Over 1200 staff operate from offices located throughout the UK and Europe, with combined funds under management of £29.8 billion. Investec Wealth & Investment is one of the UK's

leading providers of private client investment management services (*for more information, see page 8 of the 2016 Annual Report*).

The services provided by Investec Wealth & Investment include:

- Investments and savings
 - Discretionary and advisory portfolio management services for private clients
 - Specialist investment management services for charities, pension schemes and trusts
 - Independent financial planning advice for private clients
 - Specialist portfolio management services for international clients.
- Pensions and retirement
 - Discretionary investment management for company pension and Self Invested Personal Pensions (SIPPs)
 - Advice and guidance on pension schemes, life assurance and income protection schemes.
- Financial planning
 - Succession planning
 - ISAs
 - Retirement planning

Specialist Banking

The Bank operates as a specialist bank, focusing on three key areas of activity: Investment activities, Corporate and Institutional Banking activities and Private Banking activities. Each business provides specialised products and services to defined target markets.

Corporates/government/institutional clients		High income and high net worth private clients
Investment activities	Corporate and Institutional Banking activities	Private Banking activities
Principal investments Property investment and fund management	Treasury and trading services Specialised lending, funds and debt capital markets Institutional research, sales and trading Advisory and equity capital markets	Transactional banking and foreign exchange Lending Deposits
Australia Hong Kong UK and Europe	Australia India UK and Europe Hong Kong USA	UK and Europe

Private Banking Activities

Private client offering providing day-to-day banking, savings, financing and foreign exchange tailored to suit the Bank’s clients’ needs.

The Bank’s target market includes high net worth individuals, wealthy entrepreneurs, high-income professionals, owner managers in mid-market companies and sophisticated investors (for more information, see page 7 of the 2016 Annual Report).

Investment Activities

The Bank’s principal investments business in Hong Kong largely focuses on pre-IPO investment opportunities in Chinese companies with good track records, whilst its businesses in the UK and Australia focus on opportunistic investment alongside clients (for more information, see page 7 of the 2016 Annual Report).

The Bank’s property business focuses on property fund management and property investments.

Corporate and Institutional Banking Activities

The Bank’s Corporate and Institutional Banking business is a client focused business concentrating on traditional lending and debt origination activities, as well as the provision of advisory services and treasury and trading services that are customer-flow related. The Bank’s target market includes small, mid-sized and listed corporates, private equity community and institutions. In addition the Bank provides niche, specialist solutions in aircraft, project, resource and marine finance (for more information, see page 7 of the 2016 Annual Report).

Trend information

The Bank, in its audited consolidated financial statements for the year ended 31 March 2016, reported an increase of 44.6% in operating profit before goodwill and acquired intangibles and after non-controlling interests to £146.3 million (2015: £101.2 million). The balance sheet remains strong, supported by sound capital and liquidity ratios. At 31 March 2016, the Bank had £5.0 billion of cash and near cash to support its activities, representing approximately 45.7% of its customer deposits. Customer deposits have increased by 4.3% since 31 March 2015 to £11.0 billion at 31 March 2016. The Bank's loan to deposit ratio was 70.5% as at 31 March 2016 (2015: 66.5%). At 31 March 2016, the Bank's total capital adequacy ratio was 17.0% and its tier 1 ratio was 11.9%. The Bank's anticipated 'fully loaded' common equity tier 1 ratio and leverage ratio are 11.9% and 7.5%, respectively (where 'fully loaded' is based on Capital Requirements Regulation ("**CRR**") requirements as fully phased in by 2022). These disclosures incorporate the deduction of foreseeable dividends as required by the CRR and European Banking Authority technical standards. Excluding this deduction, the ratio would be 0.30% higher. The credit loss charge as a percentage of average gross core loans and advances has decreased from 1.16% at 31 March 2015 to 1.13%. The Bank's gearing ratio remains low with total assets to equity decreasing to 9.9 times at 31 March 2016 (*for more information, see pages 10-14 of the 2016 Annual Report*).

Regulation and Risk Management

Regulation

The FSA (now the PRA and the FCA) and the South African Reserve Bank ("**SARB**") entered into a Memorandum of Understanding in 2002 which sets out the basis upon which the Investec Group as a whole will be regulated and how these two main regulators will co-operate. The SARB undertakes consolidated supervision of Investec Limited and its subsidiaries as well as acting as lead regulator of the Investec Group as a whole. The FCA and PRA undertake consolidated supervision of Investec plc and its subsidiaries.

Accordingly, the Bank is authorised by the PRA and regulated by the FCA and the PRA. The Bank is therefore subject to PRA limits and capital adequacy requirements. In addition the Bank, through its operating subsidiaries, operates in a variety of other extensively regulated jurisdictions including Australia and Ireland, where it has obtained all necessary regulatory authorisations.

Risk Management

The Investec Group recognises that an effective risk management function is fundamental to its business. Taking international best practice into account, its comprehensive risk management process involves identifying, quantifying, managing and mitigating the risks associated with each of the businesses.

Risk awareness, control and compliance

The Group Risk Management team monitors, manages and reports on risk to ensure that they are within the stated risk appetite mandated by the board of directors through the board risk and capital committee.

The group monitors and controls risk exposure through independent Credit, Market, Liquidity, Operational, Legal Risk Internal Audit and Compliance teams. This approach is core to assuming a tolerable risk and reward profile, helping to pursue controlled growth across the business.

Group Risk Management operates within an integrated geographical and divisional structure, in line with management approach, ensuring that the appropriate processes are used to address all risks across the group. Group Risk Management has a specialist division in the UK and smaller risk divisions in other regions, tasked with promoting sound risk management practices.

Group Risk Management units are locally responsive yet globally aware. This helps to ensure that all initiatives and businesses operate within defined risk parameters and objectives, continually seeking new ways to enhance techniques.

In the ordinary course of business, the business is exposed to various risks, including credit, market, interest rate and liquidity, operational, legal and reputational risks.

Loan administration and loan loss provisioning

The Bank's loan administration and loan loss provisioning Process addresses the risk that counterparties will be unable or unwilling to meet their obligations to Investec plc as they fall due or that the credit quality of third parties to whom the Bank is exposed deteriorates. Credit risk arises from lending, derivative and other transactions involving on and off balance sheet instruments. The Bank's risk management policies cover geographical, product, market and individual counterparty concentrations. All exposures are reviewed frequently against approved limits, independently of each business unit. Excesses are reported/escalated to Credit, Management, Executive Risk Review Forum and Board Risk as required (amongst other things).

A tiered system of credit committees has been created in order to attempt to procure that credit exposures are authorised at an appropriate level of seniority. The main UK Group Credit Committee includes executive directors and senior management independent of the line management function. All credit committees are required to reach a unanimous consensus before authorising a credit exposure and each approval is signed by a valid quorum.

Credit limits on all lending, including treasury and interbank lines, are reviewed at least annually. The arrears policy is strictly controlled and regular reviews are held to evaluate the necessity and adequacy of specific provisions and whether the suspension of interest charged to the customer is required. Arrears Committees regularly review delinquent facilities. They ensure that an agreed strategy for remedial action is implemented and that specific provisions are made where necessary.

The Bank has a focused business strategy and has considerable expertise in its chosen sectors. The majority of the Bank's lending, excluding interbank placements, are predominantly to UK and European clients and is secured on assets and is amortising. On a geographical basis, over 80% of the credit exposure of the Bank, including contingent liabilities and commitments, is to the UK domestic market, Continental Europe. Risk limits permit only modest exposure to South Africa and minimal exposure to other emerging markets (*for more information, see page 90 of the 2016 Annual Report and the section 'Risk Management' generally*).

Dividend policy of Investec Group and the Bank

The Investec Group's dividend policy is to maintain a dividend cover of between 1.7 and 3.5 times based on earnings per share of the combined Investec Group (incorporating the results of Investec plc and Investec Limited) before goodwill and non-operating items.

In determining the level of dividend to be paid in respect of any financial period, the management of the Bank has regard to, among other factors, its capital position and requirements, the profits generated in respect of such period in relation to the general profits trend of the Bank, its strategy and certain regulatory and tax considerations. The Bank would not expect to recommend dividends such that it would distribute in excess of 80% of its consolidated profit before goodwill and non-operating items but after tax for the relevant period.

The holders of shares in Investec plc and Investec Limited will share proportionately on a per share basis all dividends declared by the Investec Group. Where possible, each of Investec plc and Investec Limited will pay such dividends to their respective shareholders. However, the DLC structure makes provision through dividend access trusts for either company to pay a dividend directly to the shareholders of the other. As of 31 March 2016, Investec plc had issued 68.2% of the combined issued ordinary share capital of Investec plc and Investec Limited.

Investec plc will, in turn, require sufficient dividends from the Bank and its other subsidiaries to establish sufficient distributable funds to pay its share of the DLC dividend.

Directors

The names of the directors of the Bank, the business address of each of whom, in their capacity as directors of the Bank, is 2 Gresham Street, London EC2V 7QP, and their respective principal outside activities are as follows:

Name	Role	Principal outside activities
Fani Titi	Non-executive Chairman	Non-executive director and Chairman of Investec plc and Investec Limited, and Investec Bank Limited
David van der Walt	Chief Executive Officer	Joint Global Head of the Specialist Bank
Ian Wohlman	Executive director	Head of Risk Management – UK and Europe
Kevin McKenna	Executive director	Chief Operating Officer of the Bank
Bernard Kantor	Executive director	Managing Director of Investec plc and Investec Limited, director of Investec Bank Limited
Peregrine Crosthwaite	Non-executive director	Senior Independent Non-executive director of Investec plc and Investec Limited
Stephen Koseff	Executive director	Chief Executive Officer of Investec plc and Investec Limited, director of Investec Bank Limited
Haruko Fukuda	Non-executive director	Director of Investec plc and Investec Limited
David Friedland	Non-executive director	Director of Investec plc and Investec Limited
James Kieran (Ciaran) Colum Whelan	Executive director	Joint Global Head of the Specialist Bank

No potential conflicts of interest exist between the duties that the directors of the Bank owe to the Bank and their private interests or other duties.

Additional Information

The Bank was incorporated as a private limited company with limited liability on 20 December 1950 under the Companies Act 1948 and registered in England and Wales under registered number 00489604 with the name Edward Bates & Sons Limited. It changed its name on 24 October 1977 to Allied Arab Bank Limited. On 1 September 1989, it changed its name to Allied Trust Bank Limited, and again changed its name to Investec Bank (UK) Limited on 6 January 1997. On 23 January 2009, it re-registered under the Companies Act 1985 as a public limited company and is now incorporated under the name Investec Bank plc.

The objects of the Bank are set out in paragraph 4 of its Memorandum of Association and, in summary, are to carry on the activities of a banking institution. The Memorandum and Articles of Association of the Bank have been filed with the Registrar of Companies in England and Wales and are available for inspection as provided in "General Information" below.

As at the date hereof, the Bank's authorised share capital is £2,000,000,000 divided into 2,000,000,000 ordinary shares of £1 each, of which 1,186,800,000 ordinary shares have been issued and are fully paid up. The registered office and principal establishment of the Bank is 2 Gresham Street, London EC2V 7QP, tel: +44 20 7597 4000.

GENERAL INFORMATION

*All references in this section of this Registration Document to "**Bank**" and "**Issuer**" refer to Investec Bank plc, all references to "**Group**" refer to Investec Bank plc and its subsidiary undertakings and all references to "**Investec Group**" refer to Investec Bank plc and Investec Limited.*

1. Investec Bank plc (the "**Bank**") prepares its consolidated financial statements in accordance with International Financial Reporting Standards ("**IFRS**").
2. There has been no significant change in the financial or trading position of the Bank and its subsidiary undertakings since 31 March 2016, being the end of the most recent financial period for which it has published financial statements.
3. There has been no material adverse change in the prospects of the Bank since the financial year ended 31 March 2016, the most recent financial year for which it has published audited financial statements.
4. There are no, and have not been any, governmental, legal or arbitration proceedings (including any such proceedings which are pending or threatened of which the Bank is aware) during the 12 month period before the date of this Registration Document which may have, or have had in the recent past, significant effects on the Bank and/or the group's financial position or profitability.
5. The audited consolidated financial statements of the Bank for the financial years ended 31 March 2015 and 31 March 2016 have been audited without qualification by Ernst & Young LLP, chartered accountants, registered auditors and independent auditors whose address is 25 Churchill Place, Canary Wharf, London E14 5EY.
6. For so long as the Bank may issue securities with respect to which this Registration Document forms part of a prospectus prepared by the Bank relating to such securities (a "**Prospectus**"), the following documents may be inspected during normal business hours at the registered office of the Bank:
 - (i) the Memorandum and Articles of Association of the Bank; and
 - (ii) the Annual Report and Accounts of the Bank and its subsidiary undertakings for the years ended 31 March 2015 and 31 March 2016, together with all other audited annual reports and accounts of the Bank and its subsidiary undertakings subsequent to 31 March 2016.
7. The Bank will, at its registered office, and at the specified offices of Deutsche Bank AG, London Branch, which shall include any successor (the "**Paying Agents**") make available for inspection during normal office hours, free of charge, a copy of this Registration Document, including any document incorporated by reference herein, and any Prospectus (as defined above). Written requests for inspection of such documents should be directed to the specified office of the relevant Paying Agent.

REGISTERED OFFICE OF THE BANK

Investec Bank plc
2 Gresham Street
London EC2V 7QP